

# SUGARLOAF MOUNTAIN

## THE OUTDOOR CENTER - SUGARLOAF'S BEST KEPT SECRET...

Sugarloaf may be best known as an alpine skiing resort, but tucked away in the woods just minutes from the base area is Maine's largest Nordic center, featuring a spectacular newly renovated lodge. The Sugarloaf Outdoor Center offers cross-country skiing and snowshoeing on more than 95 km of groomed trails and ice skating on an NHL sized rink. The Outdoor Center's state of the art facilities that have seen more than \$1.4 million in renovations over the past three years, and with the Alpine Exchange program you can enjoy all of the benefits of the Outdoor Center with just your alpine lift ticket.

With over \$1 million in renovations over the past three seasons, the Outdoor Center Lodge is the ideal place to hang out beside the fire and escape the hustle and bustle Sugarloaf's Base Area. With spectacular mountain views and homemade soups, sandwiches, and pastries at the Bull Moose Bakery, the Lodge might just be Sugarloaf's best lunch spot.

The Lodge also features a full retail store with the latest in Nordic equipment and apparel, as well as a full rental fleet to outfit you with everything you need to explore the great outdoors.

And if you just can't get completely away from the outside world, there is wireless blueStreak™ Internet access at the Outdoor Center

With nearly 100km of marked, maintained, and patrolled trails, the Outdoor Center is Maine's largest Nordic center. Trails are maintained for both classic and skate skiing, and offer some of the most unique and spectacular views of Sugarloaf. Enjoy the solitude of the Maine woods in the winter and explore new locations!

The Outdoor Center hosts numerous Nordic races and family friendly events throughout the season. Trail conditions are updated daily on our Conditions Page, and you can check out our entire trail network on the Outdoor Center Trail Map.

The Outdoor Center offers miles of maintained snowshoe trails, providing endless hours of snowshoeing fun. The staff offers guided "Snowshoe Safaris" and the popular lunchtime "Shoe 'n Stew" tours. Rental snowshoes are available, and snowshoe trails are marked on the trail map.

The Outdoor Center also boasts a newly renovated NHL sized rink and a full line of ice skate rentals for children and adults alike. The rink typically opens for the season in mid-December and remains open until mid-March.

### HOURS:

Sunday-Friday: 9am-5pm;  
Saturday & Holidays: 9am-8pm

### SPECIAL PROGRAMS:

\* **Family Skate** (no hockey):

Sunday 11am-1pm; \* **Public**

**Skate:** Sunday 1pm-5pm,

Saturday 9am-8pm; \* **Adult**

**Hockey:** Tuesdays &

Thursdays 6-8pm, Sunday 9-

11am; \* **Youth Hockey:**

Tuesdays & Thursdays 4:30-

5:30pm.

All 100km of Outdoor Center



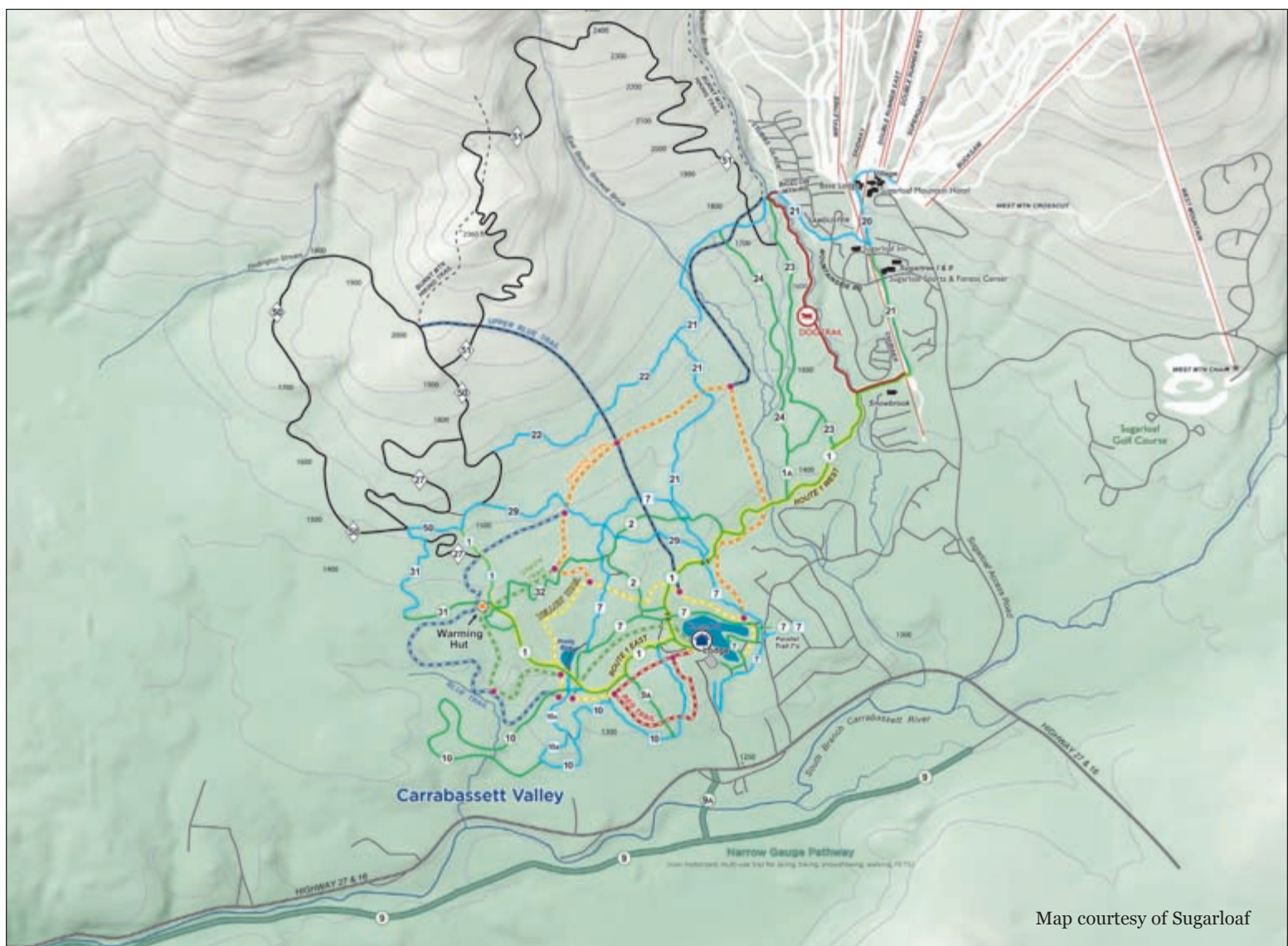
trails included with every lift ticket!

The Alpine Exchange program allows guests to ski the fabled slopes of Sugarloaf and trek the expansive Nordic trail network of the Outdoor Center all in one day. Every Sugarloaf lift ticket also grants you full access to Nordic trails for the day, as well as free equip-

ment rentals from the Outdoor Center.

Located 1 mile south of the Sugarloaf access road. Sign on south side of Rt. 27. Follow gravel drive 3/4 mile to parking area at lodge. To contact the Outdoor Center, please call 207-237-6830.

*Photos/Story Courtesy Sugarloaf*



Map courtesy of Sugarloaf